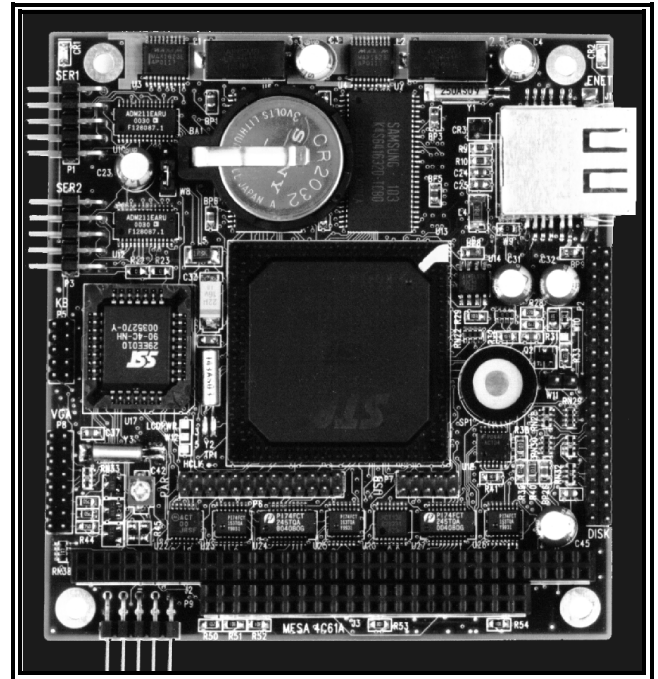


## 4C61A PC104 CPU WITH VIDEO/ETHERNET

- 133 MHz 5X86 CPU with FPU
- 32M or 64M bytes system RAM
- 10/100 BaseT Ethernet
- Built-in SVGA video
- Built-in TFT LCD support
- Built-in IDE flash drive
- 2 USB Ports
- 2 16C550 type RS-232 serial ports
- EPP/ECP/IEEE1284 parallel port
- Keyboard - PS/2 mouse interface
- Hardware watchdog timer
- 5V only operation
- Made in USA - local support
- 2 year warranty



The 4C61A is a high performance, high integration 5X86 based PC/104 CPU card.

The 4C61A has built-in 10/100 Base T Ethernet, SVGA video, and TFT LCD support, and on card IDE flash drive.

The built in video shares system memory (UMA) for low cost and high performance. The built-in SVGA/TFT video supports resolutions up to 1024x768 by 24 bits and video memory sizes from 512K to 4096K. The built-in SVGA video can be disabled if desired.

System memory can be 32M or 64M bytes. depending on 4C61A model. System memory is 64 bits wide for high performance.

A 16M to 128M byte IDE flash drive is built into the 4C61A. Since the built-in flash drive is IDE compatible, no special drivers are needed, regardless of operating system.

An external IDE interface is also provided. IDE interfaces are PCI based or high performance.

Standard I/O include two 16C550 compatible RS-232 serial ports. One of the ports can be configured for RS-485 type interface.

A bi-directional EPP/ECP/IEEE1284 compliant parallel port is provided, as are a standard battery backed clock calendar, 2 USB ports, keyboard interface and a PS/2 type mouse interface.

A high performance National Semiconductor DP83815 PCI based 10/100 Base T Ethernet interface provides network connectivity.

The 4C61A's watchdog timer and EEPROM BIOS setup storage make the 4C61A well suited to embedded applications.

**Specifications:****Power Consumption:**

4C61A                      1500 mA@ 5V              Max

**Operating temperature range:**

4C61A-XX                      0 - 70 °C  
4C61A-XX-I                      -40 - 85 °C

**ORDERING INFORMATION:**

Base part number:

4C61A

Add the following to the base 4C61 part number for these options:

- R32M for 32M system RAM
- R64M for 64M system RAM
- F16M for 16M flash drive
- F32M for 32M flash drive
- I for industrial temperature range.