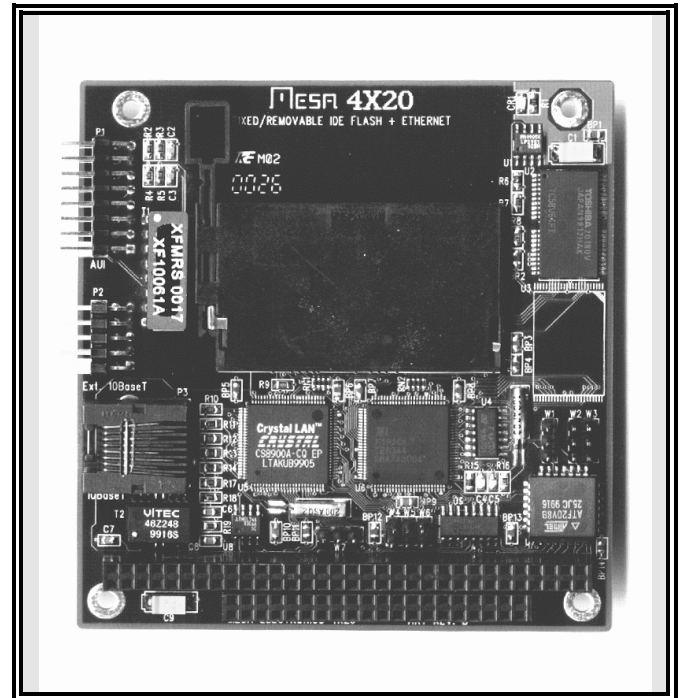


## 4X20 PC/104 FIXED/REMOVABLE IDE FLASH DRIVE

- **8M - 64M fixed drive capacity**
- **Compact flash socket**
- **IDE compatible - no special drivers!**
- **ECC and wear leveling**
- **NAND flash device**
- **Primary or secondary IDE address**
- **Optional 10BaseT/AUI Ethernet**
- **Low power consumption**
- **Available in Industrial temp version**
- **Made in USA - local support**
- **2 year warranty**



The 4X20 is a 8,16,32, or 64M byte fixed + removable IDE flash drive in a PC/104 format. A compact flash socket with ejector button provides the removable storage.

The low power consumption, good I/O performance and high reliability make the 4X20 suited to many embedded system storage applications.

Since the 4X20 has a built in IDE controller, it is compatible with and bootable by most operating systems without the need for drivers or extension ROMS.

The fixed and removable drive can be set for master and slave or vice versa by jumpers.

The NAND flash chips used on the 4X20 have a long inherent life span which is enhanced by the controllers built in ECC and wear leveling.

The 4X20 can use the primary (01F0h), secondary (0170h), or tertiary (0150H) IDE address so that it does not interfere with existing IDE drives.

Only +5V power is required by the 4X20 and current consumption is less than 100mA operating and 10mA idle.

An optional on card 10BaseT/AUI Ethernet interface is also provided by the 4X20. The Ethernet AUI connector requires +12V bus power. An optional adapter (TAU) allows remote panel mount RJ45.

**ORDERING INFORMATION:**

4X20-8M	8M FIXED FLASH DRIVE
4X20-16M	16M FIXED FLASH DRIVE
4X20-32M	32M FIXED FLASH DRIVE
4X20-64M	64M FIXED FLASH DRIVE
4X20-ETHER	ETHERNET OPTION

Add -I for Industrial temperature range (-40 to +85 °C)