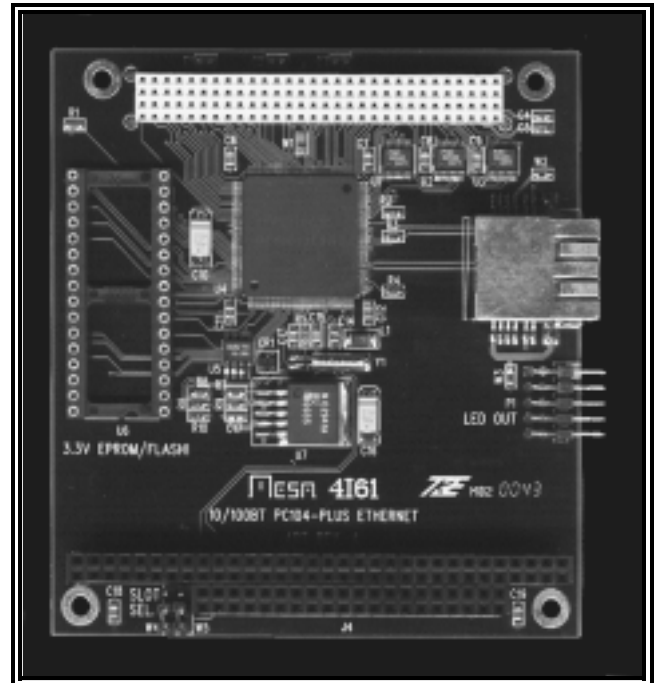


4I61 PC104-PLUS 10/100BT ETHERNET

- **10/100 BaseT PC104-PLUS Ethernet**
- **Full duplex 10BT and 100BT**
- **Uses National DP83C815 chip**
- **802.3U Autonegotiation**
- **Flash boot PROM socket**
- **Universal - 5V or 3.3V operation**
- **Link and activity LEDES on RJ45**
- **Connector for external status LEDES**
- **Uses PC104-Plus slots 0 , 1, or 2**
- **Made in USA - local support**
- **2 year warranty**
- **Industrial temp range available**



The 4I61 is a low cost, high performance 10/100 BaseT Ethernet card in PC/104-plus format. It uses the National Semiconductor DP83815 Ethernet chip with integrated PHY for minimum component count and reliability.

The 4I61 is a universal card and can work in 5V and 3.3V systems. It is a PC/104-PLUS card, meaning that in addition to the stackthrough PCI connector, the standard PC/104 stackthrough connector is available. The 4I61 can use PC104-Plus slots 0,1, 2.

The 4I61 supports full duplex in both 10BT and 100BT modes with 802.3u compatible autonegotiation. A ROM socket is provided for network boot uses. The ROM socket supports writing to flash EEPROMs.

The 4I61 has VLAN and long frame support. A connector is provided for three external status LEDES: link10,link100 and activity

Like all Mesa cards , the 4I61 has a 2 year warranty and is available in industrial temperature range (-40C >> +85C)

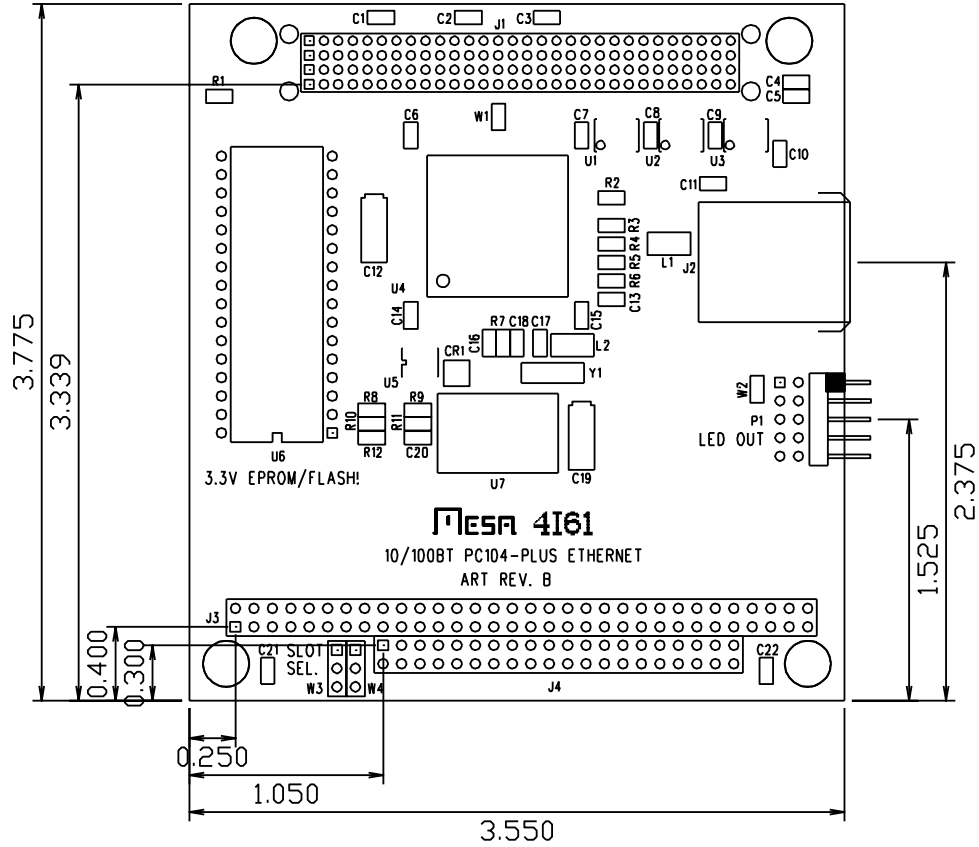
Specifications:

Power Consumption:

4161 250 mA@ 5V Max

Operating temperature range:

4161 0 - 70 °C
 4161-I -40 - 85 °C



ORDERING INFORMATION:

Base part numbers:

- 4161 Commercial temperature range
- 4161-I Industrial temperature range